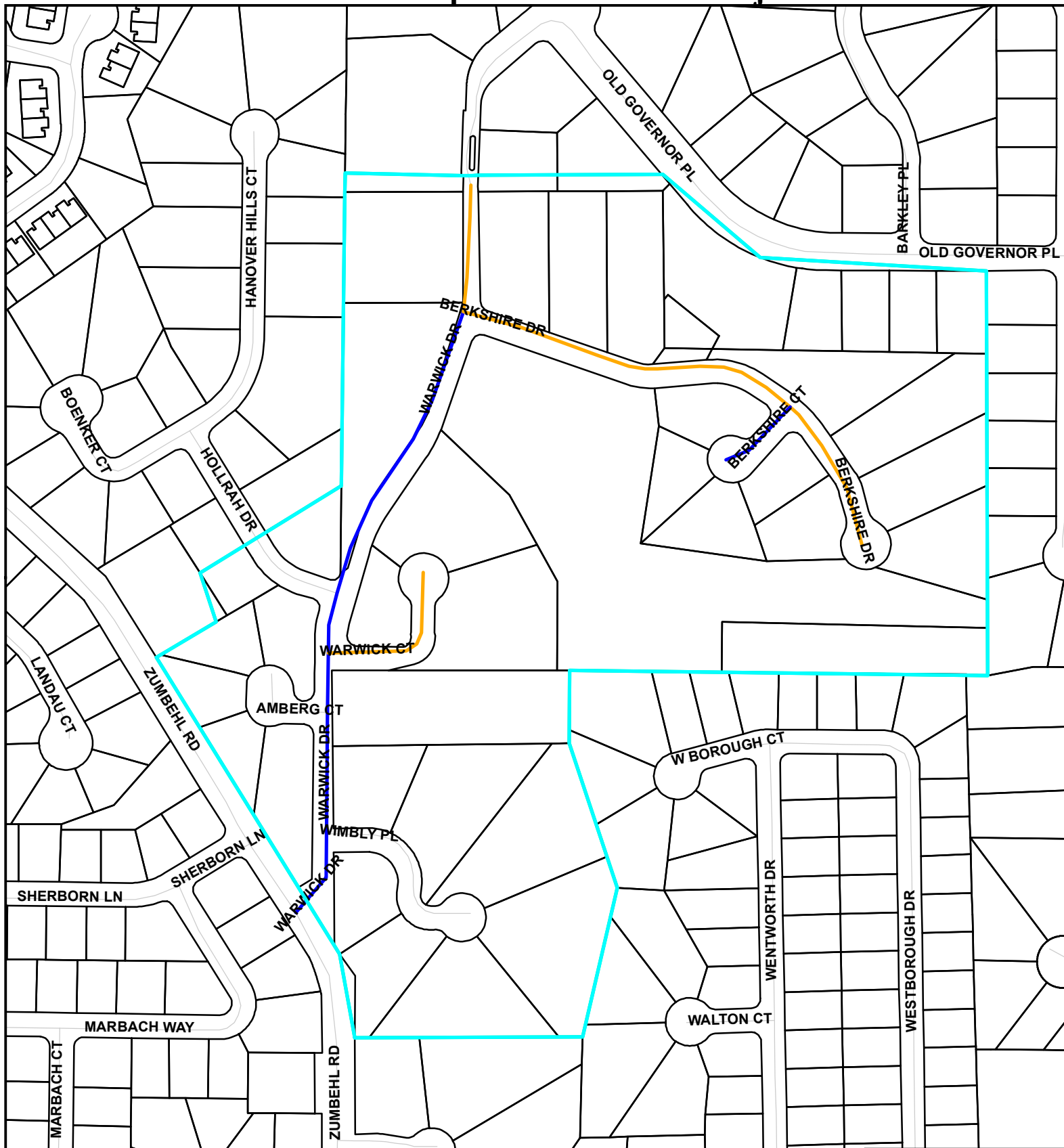


2016 Annual Asphalt Maintenance Project: 8-2



Treatment

- Crack Seal
- Micro-Surface
- Mill/Overlay
- Reconstruct

DISCLAIMER: This map is based on information maintained by the City of St. Charles, Missouri. The City does not warrant or guarantee the accuracy or completeness of the information shown. It is the responsibility of the user of this information to verify independently its accuracy and completeness. By using this information, the user waives any and all claims against the City of St. Charles, Missouri, arising from such use.

NOT TO SCALE

DATE: 1/20/2016

Project Area

