

# Mel Wetter

## MO 370, St. Charles County

Corridor Study  
West of Mel Wetter Overpass to  
East of MO 94 Interchange

Community Advisory Group Meeting

May 11, 2017

# Project Defined

## Purpose of Study:

Improved Regional Access via Mel Wetter

Improve Travel Times without Hindering MO 370 or MO 94 Interchange

## Limits:

MO 370: West of Mel Wetter (5<sup>th</sup> Street) Overpass to east of the MO 94 Interchange

Mel Wetter: From Little Hills Expressway to Duchesne Dr. Intersection

MO 94: From Little Hills Expressway to Barthel Ave.

# Project Defined

## Study Scope of work:

Review existing and projected conditions for future traffic demands

Traffic Modeling, cost estimates, and economic impacts

Right of Way impacts and impacts/improvements to GRG Trail System

Evaluate Project Phasing and Completion of the Ultimate Improvement

## Schedule:

Complete Study before the end of 2017

# Evaluation Criteria

Traffic Forecasts and Operations  
Conceptual Alignments, Profiles  
Interchanges/Intersection Types  
Approximate Right of Way Needs  
Potential Economic Impacts  
GRG Trail System Impacts  
Safety Analysis  
Conceptual Costs

# Steps in the Study Process

Generate Feasible Alternatives.

Rank these options using traffic software programs, economic viability, Safety, Congestion, etc.

Make Final Recommendation for Preferred Alternate

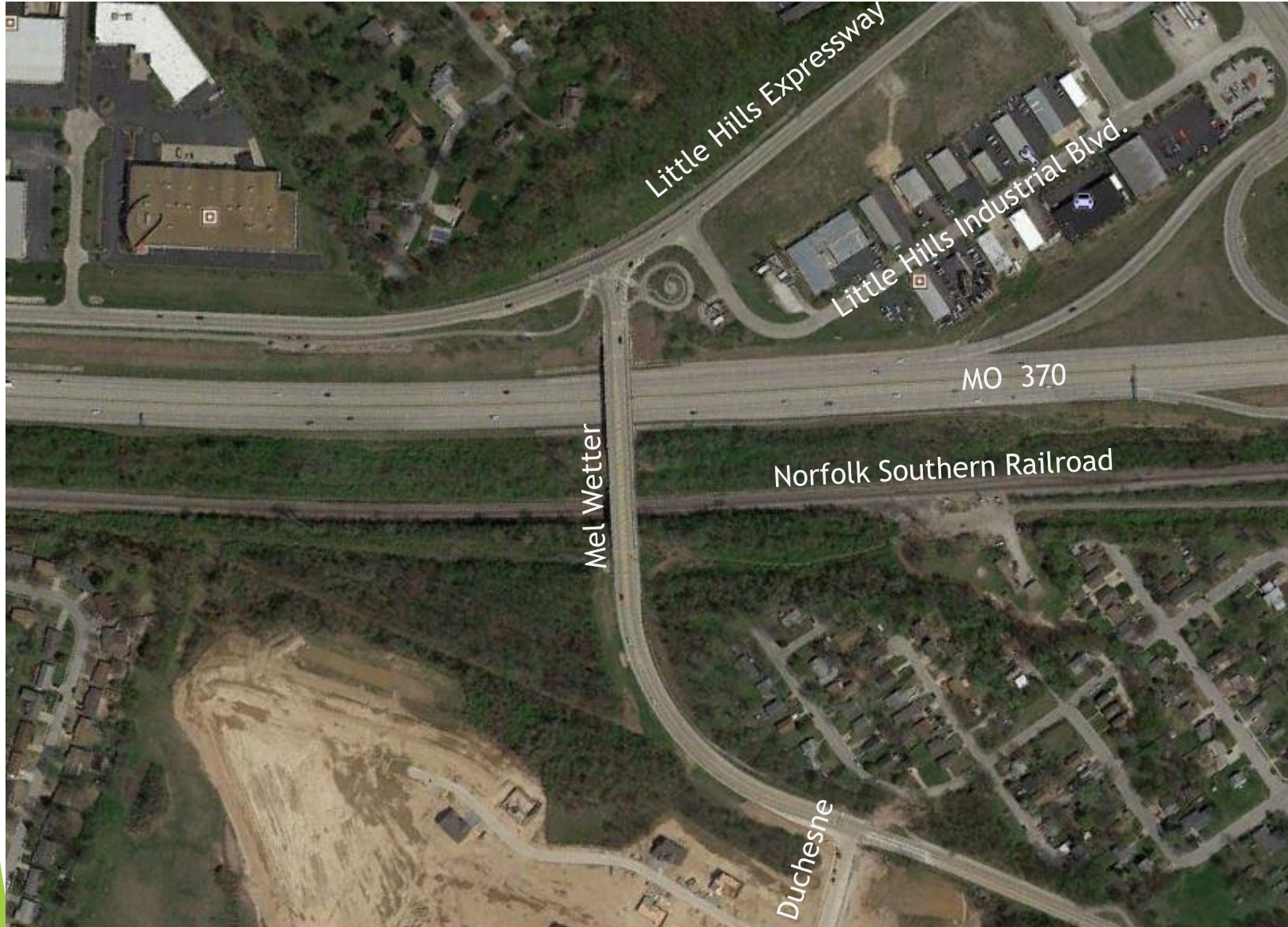
Provide Potential Phasing of Preferred Alternate

Public Meeting to Show Study Findings and Recommendations

Obtain Funding for Improvements

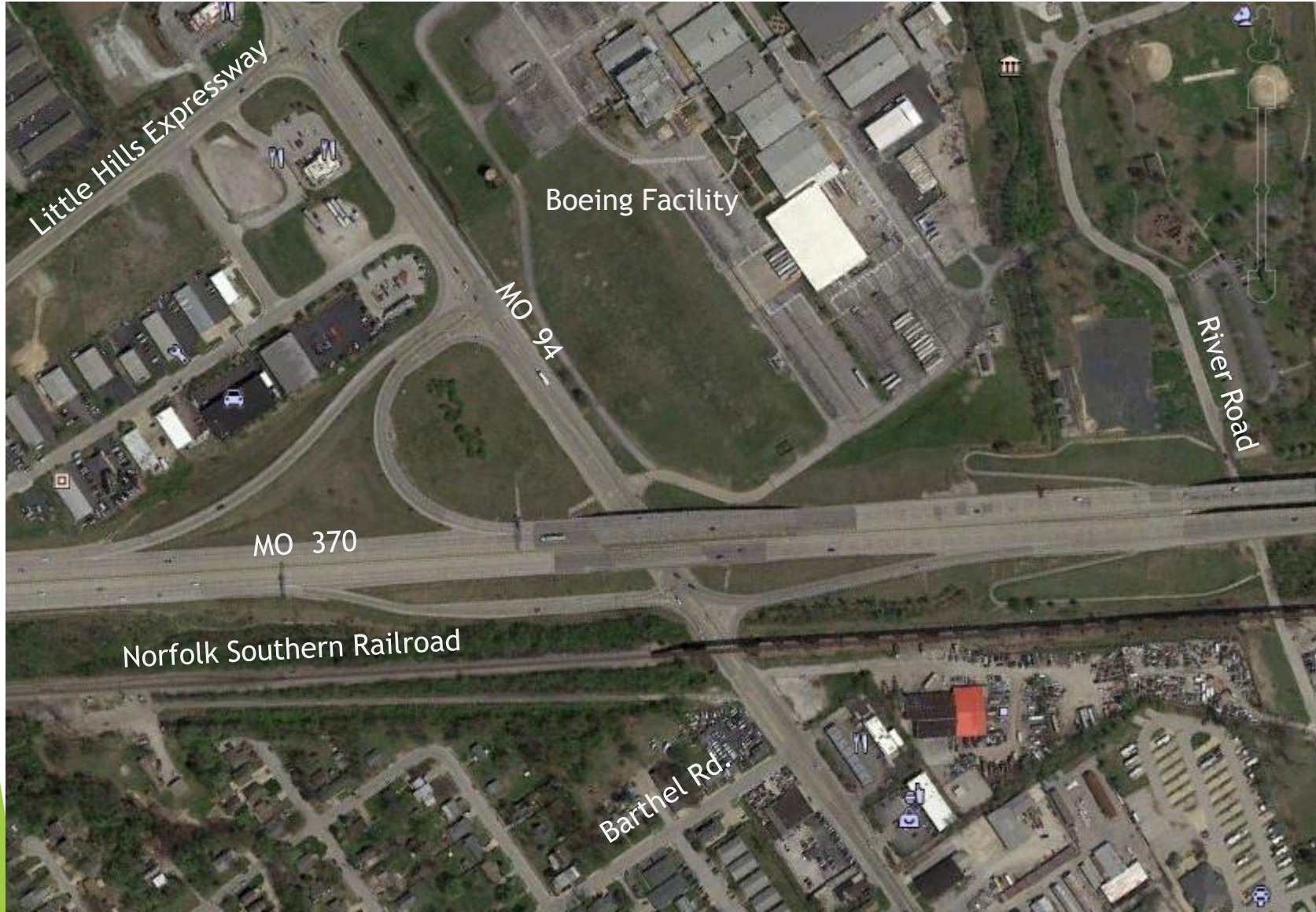
## Areas to be Evaluated

# Full Access at Mel Wetter Overpass



## Areas to be Evaluated

# Modified MO 94 Interchange, River Road Access



# Areas to be Evaluated

## Maintain/Enhance GRG Trail Along MO 370





# One Alternative Being Reviewed: Direct Access to Mel Wetter from MO 370



# Next Steps in the Study Process

Generate Feasible Alternatives. Reduce viable options to 2

Rank these options using Traffic software programs, economics  
Viability, Safety, Congestion, Public Engagement, etc.

Make Final Recommendation for Preferred Alternate

Provide Potential Phasing of Preferred Alternate

Public Meeting to Show Study Findings and Recommendations

Obtain Funding for Improvements

# Mel Wetter

## MO 370, St. Charles County

Comments,

Concerns,

Questions?

*Thanks for you Time and Interest in this  
Corridor*